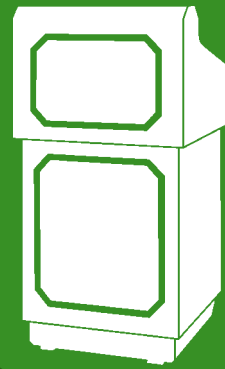


# Lecterns and Cabinets



Da-Lite Lecterns and Communication Cabinets are an attractive and highly functional addition to any conference room. Choose from a number of styles ranging from traditional to contemporary models and even models that meet ADA requirements. Each can be finished in a rich variety of wood veneers, laminates or carpet to match or compliment your room's decor. Outfit lecterns with complete sound systems, custom corporate logos and more. Communication Cabinets are available in a variety of sizes in both standard or deluxe versions.

Contents .....	
Lecterns 60-63	Conference Cabinets 65, 66
Lectern Options and Accessories 63	Cabinet Options and Accessories 66
Conference Cabinets Overview 64	

## Lecterns Contemporary Styled Lecterns



### The Concord

Sleek and elegantly styled lectern blends with any modern conference room setting.



*Carpeted version keeps its good looks in rental conditions.*

**Available Sizes:**

Description	Standard Laminate	Standard Veneer	Standard Carpet	Description	Standard Laminate	Standard Veneer	Standard Carpet
32" Floor	✓	✓	✓	25" Stacking	✓	✓	✓
25" Floor	✓	✓	✓	25" Table	✓	✓	✓
42" Special Needs Floor	✓	✓		23" Portable	✓	✓	✓

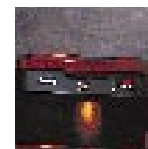
### Features for Concord and Cambridge Lecterns

- Available in floor, stacking and table top models. The Concord is also available in a 23" portable model.
- Floor models are available in a 25", 32" and a 42" special needs model with electric height adjustment. All offer an over size reading surface that holds a three ring binder, heavy duty industrial casters for easy mobility and 25" and 32" models offer a spacious storage shelf.
- 25" Stacking model converts from a full size floor lectern to a table top model with its own matching projection stand with built-in electrical receptacle and casters.
- 25" Table top model sits on any surface yet performs like a full-size floor model.
- All models incorporate a high intensity reading light and LED digital clock/timer with countdown capability.



### The Cambridge

Handsome wood trim defines the edges of the Cambridge for a soft, contemporary look.



*Large and well lit reading surface conveniently holds a three ring binder.*

**Available Sizes:**

Description	Standard Laminate	Standard Veneer	Description	Standard Laminate	Standard Veneer
32" Floor	✓	✓	25" Stacking	✓	✓
25" Floor	✓	✓	25" Table	✓	✓
42" Special Needs Floor	✓	✓			

- See page 63 for premium sound system, and other options.
- See page 64 for standard veneers, laminates, finishes and additional details on custom finishes. Concord is also available in a carpeted version for rental applications.

Lecterns  
*Classic and Traditionally  
 Styled Lecterns*



**The Lexington**  
 Clean, rectilinear design  
 enhances a speaker's presence.

**Features for Lexington  
 and Hamilton Lecterns**

- Available in floor, stacking and table top models. The Lexington is also available in a 23" portable model.
- Floor models are available in a 25", 32" and a 42" special needs model with electric height adjustment. All offer an over-size reading surface that holds a three ring binder, heavy duty industrial casters for easy mobility and 25" and 32" models offer a spacious storage shelf.
- 25" Stacking model converts from a full size floor lectern to a table top model with its own matching projection stand with built-in electrical receptacle and casters.
- 25" Table top model sits on any surface yet performs like a full-size floor model.
- All models incorporate a high intensity reading light and LED digital clock/timer with countdown capability.



*Large and well lit reading surface conveniently holds a three ring binder.*

- See page 63 for premium sound system, and other options.
- See page 64 for standard veneers, laminates, finishes and additional details on custom finishes.

**Available Sizes:**

Description	Standard Laminate	Standard Veneer	Description	Standard Laminate	Standard Veneer
32" Floor	✓	✓	25" Stacking	✓	✓
25" Floor	✓	✓	25" Table	✓	✓
42" Special Needs Floor	✓	✓	23" Portable	✓	✓
42" Multi-Media Floor	✓	✓			



**The Hamilton**  
 The classic boardroom look that  
 never goes out of style.

**Available Sizes:**

Description	Standard Veneer	Description	Standard Veneer
32" Floor	✓	25" Stacking	✓
25" Floor	✓	25" Table	✓
42" Special Needs Floor	✓		

Lecterns  
Modern Designs for a  
Bold Statement



**The Yorkshire**

Choice of brass, bronze or other trim creates a luxurious appearance.

**Features for Pedestal and The Yorkshire Lecterns**

- Yorkshire is available in floor, and table top models. Pedestal lecterns offered in two styles, traditional and contemporary floor models with veneer finishes only.
- Yorkshire floor models are available in a 25", 32" and a 42" special needs model with electric height adjustment. Pedestal Lecterns in 25" only. Both offer an over-size reading surface that holds a three ring binder, and heavy duty industrial casters for easy mobility.
- 25" Table top model sits on any surface yet performs like a full-size floor model.
- All models incorporate a high intensity reading light and LED digital clock/timer with countdown capability.

**Available Sizes:**

Description	Standard Veneer	Description	Standard Veneer
32" Floor	✓	42" Special Needs Floor	✓
25" Floor	✓	25" Table	✓

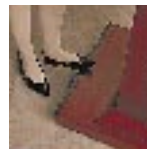


Traditional

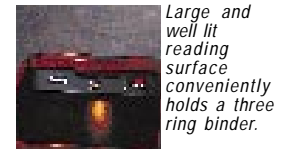
Contemporary

**Pedestal Lecterns**

Sculpted design and flowing lines adapt to today's modern conference room.



Protective strip helps prevent scratching of Pedestal base from presenter's shoes.



Large and well lit reading surface conveniently holds a three ring binder.

- See page 63 for premium sound system, and other options.
- See page 64 for standard veneers, laminates, finishes and additional details on custom finishes.

**Available Sizes:**

Description	Standard Veneer
25" Traditional	✓
25" Contemporary	✓

## Lecterns Contemporary European Designs



Classic



Meeting



Desk

### The Euro Series

Utilitarian lecterns that perform and look great!

- Choose from either fixed or rolling floor and table top models.
- Ideal for conference, meeting rooms, classrooms, etc.

- **Classic Euro** is 23" wide 47" high floor lectern with 2" carpet casters, two that lock.
- **Meeting Euro** is a 25" wide and 48" high floor lectern with a perforated front panel.
- **Desk Euro** is a table top lectern 25" wide and 16" high with a perforated front panel.
- All have a large laminate reading surface and a durable powder coat finish.

#### Available Styles:

Classic Euro Description	Meeting Euro Description	Desk Euro Description
23" W x 47" H Floor	25" W x 48" H Floor	25" W x 16" H Table

## Lectern Options and Accessories



### Sound System

Add a Premium Sound System by Anchor Audio to any lectern (except Euro Series). Provides 60 watts of RMS power.



### Height Adjustment

With a push of a button, electronically raise or lower a lectern's height within an 8" range. (Not available on stacking, table top or pedestal models.) Available in 115V and 230V.



### Custom Logos

Promote your company's identity with silkscreened acrylic, laser etched aluminum or etched brass plates from your camera ready artwork.

Call or write for pricing information



### Wireless Mic Systems

Choose either battery powered lavalier or hand-held wireless systems finished in matte black.



### Speakers

Twenty-five watt accessory speakers complement Lexington and Concord lecterns. Each stands eight inches tall and has a 100' self-storing cord.

Available in these models & finishes: Lexington (laminates), Lexington (veneers) Concord (laminates), Concord (veneers)



### Pedestal Bases

Convert any Da-Lite Table Top lectern into a free-standing floor model with 27 5/8" stand finished in either black or chrome.



### Covers

Padded and lined blue nylon covers keeps Da-Lite lecterns protected.

Available sizes:  
For 32" floor lecterns  
For 25" floor, stacking lecterns  
For 42" special needs lecterns  
For 25" table lecterns  
For 23" portable lecterns

### Microphone

High quality hand-held omni-directional microphone or fixed gooseneck microphone.

### Mic with Extension Cord

Extend a speakers' reach with either a 15' or 25' cord for hand-held microphone.

### Mic Mount

Keep hand-held microphone in position with gooseneck mount.



### Custom Cut-outs

From your specifications, multi-media controls can be mounted flush in the reading surface.



### Locking Door

Offers security for storage area in all floor and stacking models.

## Conference Cabinets Overview



Choose from Da-Lite's Standard or Deluxe Communication Cabinets on this page then go on to choose the cabinet style, finish and size to fit your needs.

- Cabinets are constructed of plywood and hardwood for strength and rigidity.

- Premium full-length piano hinges make opening doors easy and eliminates door sag.
- Magnetic door closures keep doors firmly closed while not in use while fingertip cutouts make doors easy to open.

### Standard Cabinets

These cabinets include a durable magnetic on steel whiteboard, a pull down projection screen (not available on 24" x 36" models) with Da-Lite's Matte White surface, heavy-duty spring

clamps on each door for prepared material or paper pads, marker tray and accessory kit with a paper pad, 4 dry erase markers and eraser, whiteboard cleaner and a telescopic pointer.



### Deluxe Cabinets

Includes all the features of the Standard Cabinet above plus a unique telescopic mechanism that moves the whiteboard away from the cabinet a full 23" for greater presentation presence and tilts for ease of use while reducing glare. There is also a

pull-up projection screen hidden behind the door and ready-to-use. It also utilizes a swing out arm that helps reduce keystoneing. Presenters will appreciate the magic panels on each door on which additional materials may be displayed.

### Standard and Custom Veneers and Laminates

For Lecterns and Communication Cabinets

#### Hand Rubbed Veneers

Real wood veneers have hand rubbed finishes for a deep, rich appearance. Select from

the standard offerings below or contact Da-Lite for custom veneers and color matching.



Choose from Cherry, Mahogany, Light Oak, Natural Walnut, Medium Oak, and Heritage Walnut.

#### Laminates

Select from our standard laminate choices below or contact Da-Lite for a wide range of laminates from Formica®,

Nevamar®, or Wilsonart®. (Note: The Hamilton Lectern and Communication Cabinet are only available in Veneers)



Choose from Mahogany, Gunstock Walnut and Light Oak.

Custom laminates, veneers and color matching available upon request.

Finishes and textures of veneers shown above may vary in tone or character from these printed representations. For critical color matching, contact Da-Lite for actual veneer and laminate samples.

## Conference Cabinets

*Styles to Fit any Room Decor*



### Hamilton

- A timeless design that elegantly blends with traditional decors.
- Presents a stately and sophisticated appearance that works well in corporate boardrooms or executive offices.
- Available in a variety of sizes and in veneers only.

#### Available Sizes:

Standard Cabinets Size (H x W)	Light Oak Veneer	Medium Oak Veneer	Heritage Oak Veneer	Walnut Veneer	Mahogany Veneer	Cherry Veneer
36" x 24"	✓	✓	✓	✓	✓	✓
48" x 48"	✓	✓	✓	✓	✓	✓
48" x 60"	✓	✓	✓	✓	✓	✓
48" x 72"	✓	✓	✓	✓	✓	✓
Deluxe Cabinets Size (H x W)						
48" x 60"	✓	✓	✓	✓	✓	✓



### Concord

- Contemporary styling combined with a design that fits many of today's modern office settings.
- Appealing curvilinear design makes it universally suitable for conference rooms, private offices and training rooms.
- Available in a variety of sizes.

#### Available Sizes:

Standard Cabinets Size (H x W)	Light Oak Veneer	Medium Oak Veneer	Natural Oak Veneer	Walnut Heritage Veneer	Walnut Veneer	Mahogany Veneer	Cherry Veneer	Mahogany Laminate	Light Oak Laminate	Gunstock Laminate	Walnut Laminate
36" x 24"	✓	✓	✓	✓	✓	✓	✓	✓	✓	✓	✓
48" x 48"	✓	✓	✓	✓	✓	✓	✓	✓	✓	✓	✓
48" x 60"	✓	✓	✓	✓	✓	✓	✓	✓	✓	✓	✓
48" x 72"	✓	✓	✓	✓	✓	✓	✓	✓	✓	✓	✓
Deluxe Cabinets Size (H x W)											
48" x 60"	✓	✓	✓	✓	✓	✓	✓	✓	✓	✓	✓



### Cambridge

- Solid wood bullnosing makes the Cambridge an excellent choice for any room environment.
- Makes a strong design statement while blending with almost any decor.
- Specify a different finish for the bullnosing than the cabinet body for a unique appearance.
- Available in a variety of sizes.

#### Available Sizes:

Standard Cabinets Size (H x W)	Light Oak Veneer	Medium Oak Veneer	Natural Oak Veneer	Walnut Heritage Veneer	Walnut Veneer	Mahogany Veneer	Cherry Veneer	Mahogany Laminate	Light Oak Laminate	Gunstock Laminate	Walnut Laminate
36" x 24"	✓	✓	✓	✓	✓	✓	✓	✓	✓	✓	✓
48" x 48"	✓	✓	✓	✓	✓	✓	✓	✓	✓	✓	✓
48" x 60"	✓	✓	✓	✓	✓	✓	✓	✓	✓	✓	✓
48" x 72"	✓	✓	✓	✓	✓	✓	✓	✓	✓	✓	✓
Deluxe Cabinets Size (H x W)											
48" x 60"	✓	✓	✓	✓	✓	✓	✓	✓	✓	✓	✓

## Conference Cabinets Styles to Fit any Room Decor



### Lexington

- Simple, clean rectilinear design blends easily with the decors most often found in today's offices, hotels and conference rooms.
- Its design, combined with a laminate or veneer makes it one of the most versatile cabinets.
- Available in a variety of sizes.

#### Available Sizes:

Standard Cabinets Size (H x W)	Light Veneer	Oak Veneer	Medium Veneer	Oak Natural Veneer	Walnut Veneer	Heritage Veneer	Walnut Veneer	Mahogany Veneer	Cherry Veneer	Mahogany Laminate	Light Laminate	Oak Laminate	Gunstock Laminate	Walnut Laminate
	36" x 24"	✓	✓	✓	✓	✓	✓	✓	✓	✓	✓	✓	✓	✓
48" x 48"	✓	✓	✓	✓	✓	✓	✓	✓	✓	✓	✓	✓	✓	✓
48" x 60"	✓	✓	✓	✓	✓	✓	✓	✓	✓	✓	✓	✓	✓	✓
48" x 72"	✓	✓	✓	✓	✓	✓	✓	✓	✓	✓	✓	✓	✓	✓
Deluxe Cabinets Size (H x W)														
48" x 60"	✓	✓	✓	✓	✓	✓	✓	✓	✓	✓	✓	✓	✓	✓



### Lancaster

- Stylish cabinet offers radius corners that fit into any room environment.
- The Lancaster is the perfect choice in any laminate or veneer for conference, office or meeting rooms.
- Available in a variety of sizes.

#### Available Sizes:

Standard Cabinets Size (H x W)	Light Veneer	Oak Veneer	Medium Veneer	Oak Natural Veneer	Walnut Veneer	Heritage Veneer	Walnut Veneer	Mahogany Veneer	Cherry Veneer	Mahogany Laminate	Light Laminate	Oak Laminate	Gunstock Laminate	Walnut Laminate
	36" x 24"	✓	✓	✓	✓	✓	✓	✓	✓	✓	✓	✓	✓	✓
48" x 48"	✓	✓	✓	✓	✓	✓	✓	✓	✓	✓	✓	✓	✓	✓
48" x 60"	✓	✓	✓	✓	✓	✓	✓	✓	✓	✓	✓	✓	✓	✓
48" x 72"	✓	✓	✓	✓	✓	✓	✓	✓	✓	✓	✓	✓	✓	✓
Deluxe Cabinets Size (H x W)														
48" x 60"	✓	✓	✓	✓	✓	✓	✓	✓	✓	✓	✓	✓	✓	✓

## Conference Cabinets Options & Accessories



### Magic Panels

Black hook and loop compatible fabric covered corkboard allows a wide variety of materials to be displayed.



### Cabinet Locks

Maintain privacy of sensitive information with an optional cabinet lock. Must be factory installed at time of initial cabinet order.



### Paper Pads

Available in cartons of 5 containing 40 perforated sheets per pad. See chart below for proper size.

#### Paper Pad Sizes:

Cabinet Sizes	Paper Pads
24" x 36"	T-106
48" x 48"	T-106
60" x 48"	A-306, R-305, N-290
72" x 48"	A-306, R-305, N-290

#### Paper Pads:

Model	Description
A-306	27" x 34" Plain Paper Pad
R-305	27" x 34" Ruled Paper Pad
N-290	27" x 34" Newsprint Paper Pad
T-106	27" x 34" Junior Plain Paper Pad



### Paper Pad Accessory Package

Includes standard paper pad, telescopic pointer and four markers; one each blue, red, green and black.



### White Board Package

Includes 4 dry erase makers; one each blue, red, green and black, telescopic pointer, eraser and bottle of white board cleaner.