

# Monitor Mounts



Da-Lite's Advance monitor and projector mount systems put your television, monitor or projector up and out of the way yet within an ideal viewing zone. Systems are designed with heavy-duty construction, robotic arc welded joints and sure clamping stirrups that hold monitors up to 300 lbs. securely. Optional VCR mounts, center support plates and security locks are also available to fit your needs exactly.

Contents . . . . .

Wall Mount Yoke 42	Projector Mount 43
Ceiling Mount Yoke 42	Locking Trays 44
Wall Mount Shelves 43	Optional Accessories 44



**Wall Mount Yoke**  
*Adjustable Wall Mount*

- Use for television or monitor applications that require adjustable wall mounting.
- Swivels 360° and tilts from 0-15° for optimum viewing.
- Fits mid-size to large monitors from 19" to 31" diagonal.
- Heavy-duty 16-gauge steel tube with black or putty

powder coated finish, spans three standard wall supports on 16" centers eliminating the need for a mounting plate. Supports up to 250 lbs.

- Triple support wall mount design means fewer parts and faster installation.

WMY-2134



**Ceiling Mount Yoke**  
*Adjustable Ceiling Mount*

- Use for television or monitor applications that require adjustable ceiling mounting.
- Swivels 360° and tilts from 0-15° for optimum viewing.
- Two models available to fit mid-size to large monitors from 19" to 40" diagonal.
- Heavy-duty steel tube construction and T-bar design with black or putty powder

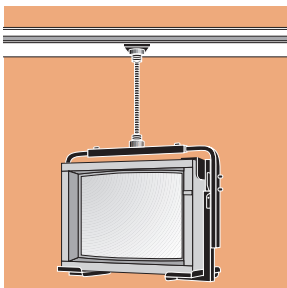
coated finish, adapts to most ceilings. Supports up to 300 lbs.

- Optional ceiling mounting pipes offer custom height capability when attached to ceiling mounting plate which is included.

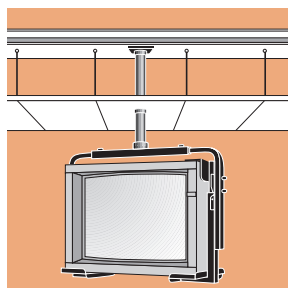
CMY-2134

**Ceiling Mount Installation Options**

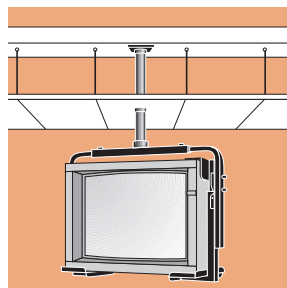
Threaded pipe installation



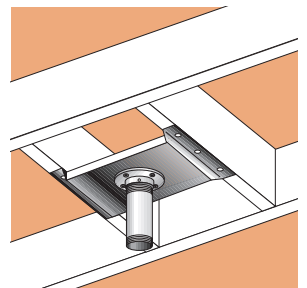
I-Beam mount



Wood beam or concrete mount



Ceiling mounting plate and threaded pipe





WMS-22

### Wall Mount Shelves *Versatile Monitor Wall Mounting*

- Ideal for applications involving smaller monitors requiring limited adjustment.
- Fits small to mid-size monitors from 12" to 25" diagonal.
- Model WMS-22 swivels 70° and tilts from 0-15° for optimum viewing. Models WMLS-22 and WMS-12 swivel 360° and also tilt from 0-15°.
- Heavy-duty single arm design constructed of 11-gauge steel tube with black or putty powder coated finish and perforated swivel tray. Supports up to 150 lbs.
- Includes safety belt for added security.
- Two model sizes: 9 1/4"L x 12"W WMS 12 and 13 1/2"L x 22"W WMS 22 offered with and without security lock.
- Models WMS-22 and WMS-12 are UL and C-UL listed.

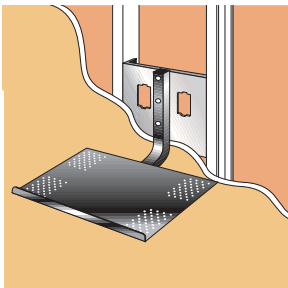


CPM-1218

### Ceiling Projector Mount *Place Projectors Out of Audience's Way*

- Handles single-gun video projectors.
- Fits projectors with maximum dimension of 12" wide by 18" long and 16" high.
- Easy tilt adjustment swivels 360° and tilts 0-15° for easy projection.
- Heavy-duty design constructed of 20-gauge steel tube with black or putty powder coated finish and perforated tray, adapts to most ceilings.
- Supports up to 75 lbs.
- Side support adjusts to height of projector.
- Includes safety belt for added security.

### Wall Mount Installation Options



Da-Lite monitor mounts and accessories are appropriate for virtually any installation. For help selecting accessories, unique installations or custom designs, please contact Da-Lite's Sales Partners at 219-267-8101.

**Locking Trays**  
*Secure Equipment on any Work Surface*



- Protect video monitors, audio video components, computers, etc.
- Lower tray is attached with four fasteners to any level surface designed to support the weight of equipment safely.
- Four perforated areas on upper tray surface make attachment of equipment a breeze while key lock allows quick removal of equipment when desired.
- Reinforced components are constructed of 20 gauge steel with a black or putty powder coated finish.
- Available in swivel and stationary models.

**Optional Accessories**  
*Customize Advance Monitor Mounts to fit Your Needs*

**Ceiling Mounting Pipes**



- Three lengths of black 1½" NPS pipe; 4", 10", or 18".
- Adjusts distance between ceiling mounting plate and yoke.

**Lock Kits**



- Two kits available.
- Lock either television/monitor to mounting system or VCR to mounts.

**Center Support**



- Provides additional monitor support on yoke mounts.
- Must be used when attaching VCR mount to CMY-3140.

**Joist Spans**



- Span between ceiling joists to attach ceiling mounting plate.
- Steel construction.

**Video Player Mount**



- Secures video player to bottom of wall and ceiling mounts.
- Adjustable in size from 3" high x 18" wide to 5½" high x 18" wide.
- Model available for stacking an additional player.

**Safety Belts**



- Extra safety feature.
- Choose from ratchet belt or cinchable belt.

**Double Support**



- Spans two vertical supports in 16" centers.